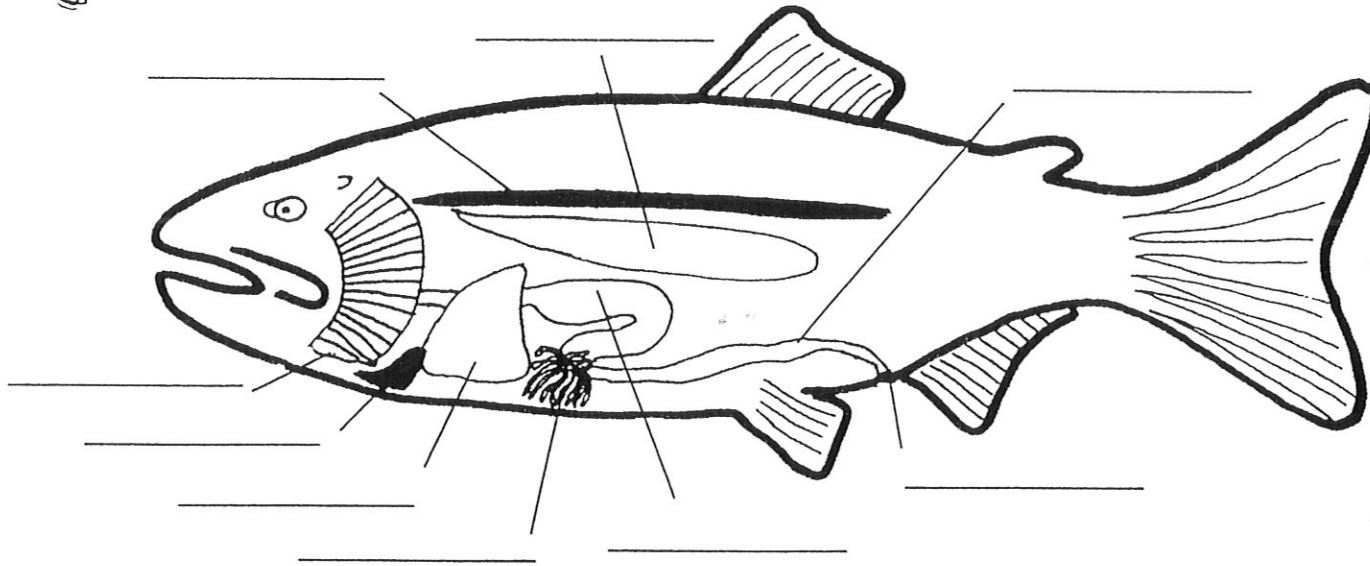


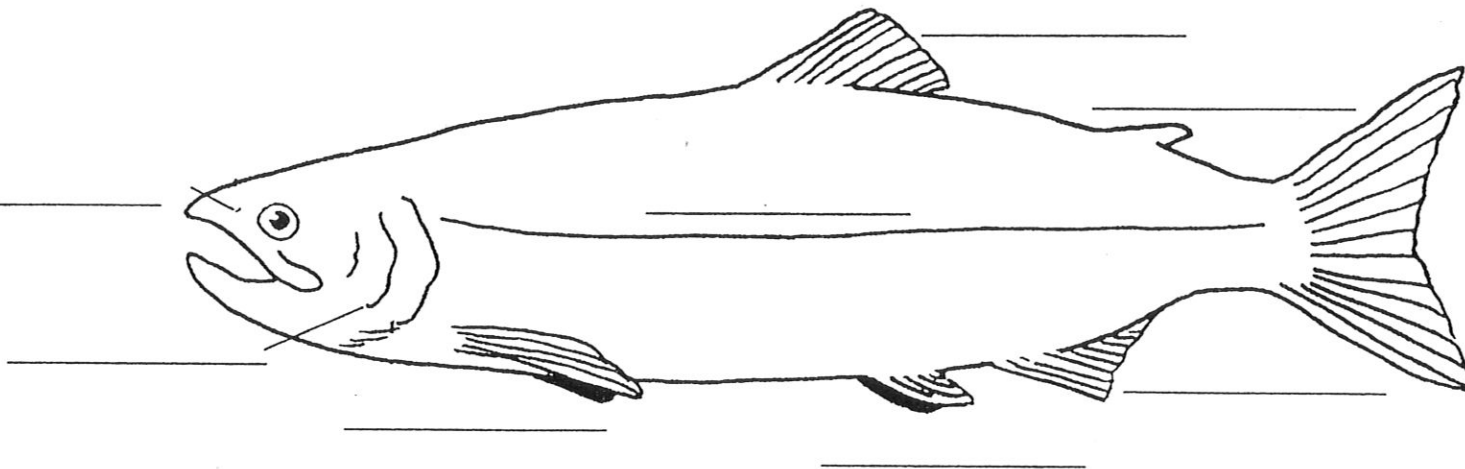


Label the Parts

Word Bank:
Pyloric Ceca
Gills
Intestines
Kidney
Stomach
Swim Bladder
Liver
Heart
Vent



Word Bank:
Caudal Fin
Adipose Fin
Pelvic Fins
Gill Cover
Anal Fin
Pectoral Fins
Lateral Line
Dorsal Fin
Nostril





What's It For?

Directions: Match the organs or features listed below with the functions they serve.

liver	intestines	color and markings	ovaries
kidneys	testes	slime	swim bladder
heart	lateral line	scales	vent
gills	pyloric caeca		

1. Keeps fungus from growing on fish's body.
2. Help fish hide from predators.
3. Used to sense vibrations.
4. Protect fish's skin. Grow as fish grows.
5. Filled with air. Allows fish to be buoyant.
6. Pumps blood through the body.
7. Absorb oxygen from the water.
8. Increases surface area of digestive tract so fish can absorb more food.
9. Makes bile that helps fish break down fat.
10. Makes blood and filters poisons from blood.
11. Produces sperm in the male fish.
12. Produces eggs in the female fish.
13. The last portion of the digestive tract.
14. Waste materials pass out of body here.

